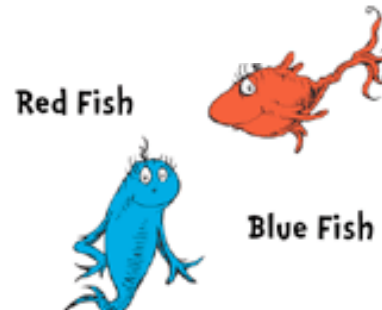


# Software and database resources for curation and management of evolutionary phenotypes



Jim Balhoff, Cartik Kothari, Hilmar Lapp, Todd Vision  
US National Evolutionary Synthesis Center  
Durham NC



# Questions for a comparative anatomical knowledgebase

- What do we know about phenotypic variation for a given anatomical feature?
- What do we know about the phenotype of a given taxon?
- What sister taxa vary from each other in same way that a given genetic mutant varies from wild type?

## Toward *computable* phenotypes

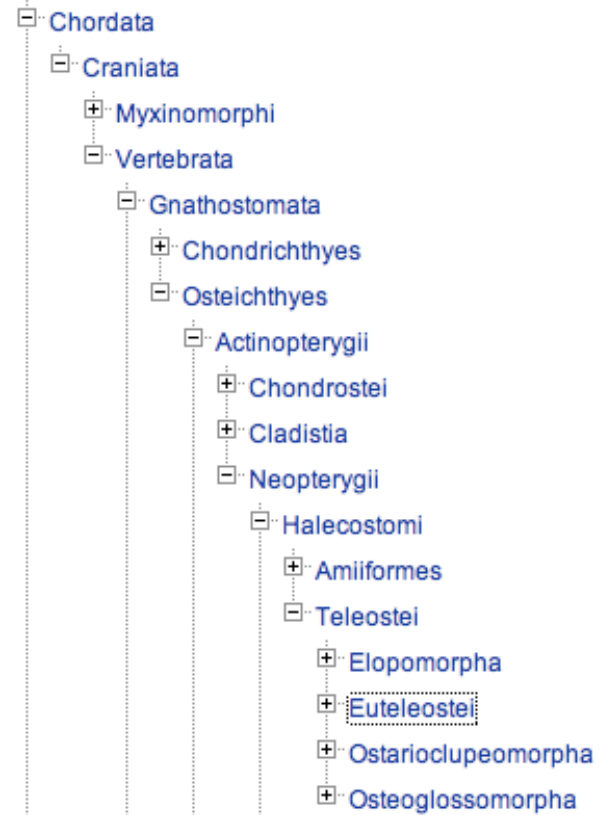
- Hard-code detailed semantics into a database application
- Capture expert knowledge in ontologies and let the computer do generic logical reasoning

## Teleost taxonomy

[← Search Results](#)

### Tree View

Tree view constructed based on *is\_a* hierarchy



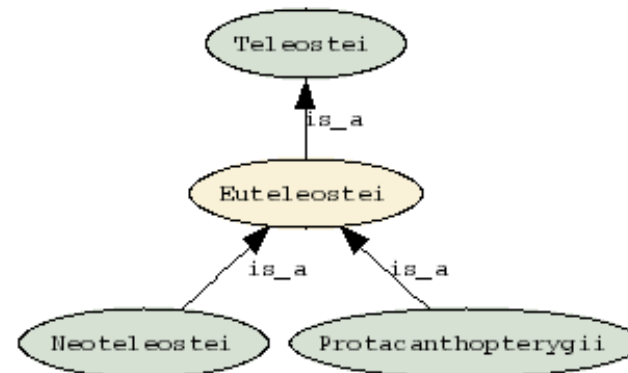
### Class/Type Details

#### General

Class/Type Name **Euteleostei**  
 Id **TTO:254**

### Graph View

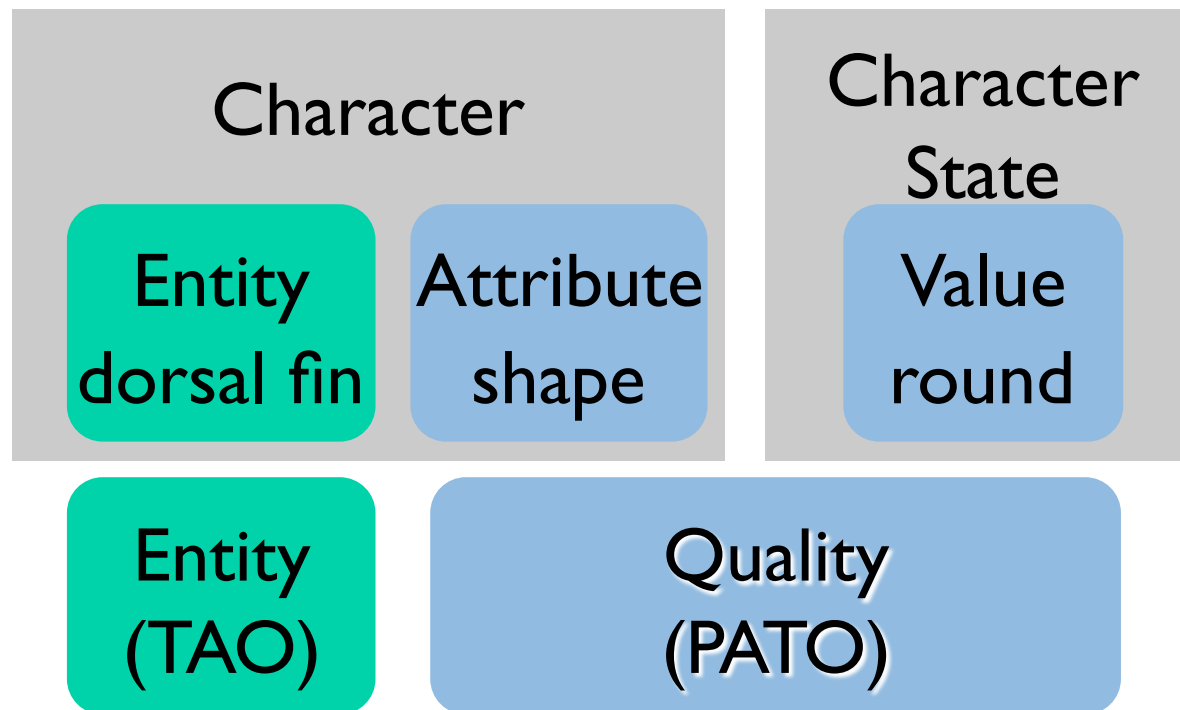
Graph Type



# Informatics requirements for application to clade **X**

- Ontologies
  - Entities: **X Anatomy Ontology**
  - Qualities: **Phenotype and Trait Ontology (PATO)**
  - Taxonomy: **X taxonomy ontology**
- Curation tool: **Phenex**
  - Mutant phenotypes from zebrafish (14K in ZFIN)
  - Cypriniform “evolutionary phenotypes” from the literature
- Ontology-driven database: **OBD**
  - With a user interface tailored for evolutionary queries

# Character Matrix and Entity-Quality syntax



# Phenex data curation software

- Separates ontology curation from data curation
- User interface
  - Displays original character matrix-style assignments
  - Guides user to select appropriate ontology terms for EQ annotations
  - Incorporates references to literature and specimens
- Technical features
  - Loads current ontologies at startup
  - Generates NeXML files that can be easily loaded into the database
  - Platform independent
  - Open-source code base

## Characters



Character Description
1 Mesethmoid shape
2 Lateral ethmoidal wing
3 Ventral diverging lamellae of the mesethmoid bone
4 Mesethmoid-vomer joint
5 Mesethmoid-vomer joint
6 ectopterygoid attachment to vomer and mesethmoid
7 rhinosphenoid
8 frontal bone shape
9 Frontal fontanel
10 paired frontal foramina
11 supraorbital and pterotic sensory canal
12 frontal-pterotic joint
13 dilator groove
14 canal of pterotic bone
15 parietal fontanel
16 parietal branch of supraorbital canal
17 supratemporal laterosensory canal
18 supraoccipital spine
19 ventromedial opening of posttemporal fossa
20 antorbital bone
21 Supraorbital bone
22 Ectopterygoid teeth

## States



Symbol	State Description	Co
1	ectopterygoid inserted on the ventral s...	No
0	ectopterygoid attached to the ventrolat...	No

## Term Info: ect...

ectopterygoid

## Basic Info

Term: **ectopterygoid**

ID: TAO:0000656

Ontology: teleost\_anatomy

Definition: The ectopterygoid is dermal bone located at the anterior part of the palatoquadrate. It is first

## Links (4)

## Parents

is\_a [dermal bone](#)part of [dermatocranium](#),  
[palatoquadrate arch](#)

## Children

part of [ectopterygoid tooth](#)

## DBxrefs (2)

ZFA:0000656

ZFIN:ZDB-ANAT-011113-581

## Phenotypes for State: 0 - ectopterygoid attached to the ventrolateral border of vomer by means of a sheath of connective tissue



Entity	Quality	Related Entity	Count	Measurement	Unit	Comment
ectopterygoid	attached to	vomer			None	None



```
<state id="da8b85c2-e88e-4777-bfcb-e5daab15d829"
  label="ectopterygoid attached to the ventrolateral border of
  vomer by means of a sheath of connective tissue" symbol="0">
  <dict>
    <key>OBO_phenotype</key>
    <any>
      <phen:phenotype>
        <phen:phenotype_character>
          <phen:description/>
          <phen:bearer>
            <phen:typeref about="TAO:0000656"/>
          </phen:bearer>
          <phen:quality>
            <phen:typeref about="PATO:0001667"/>
            <phen:related_entity>
              <phen:typeref about="TAO:0000308"/>
            </phen:related_entity>
          </phen:quality>
        </phen:phenotype_character>
      </phen:phenotype>
    </any>
  </dict>
</state>
```

# The Phenoscope database

- Based on the Open Biomedical Database (OBD) model
  - Developed by Chris Mungall
- Generic (ie organism-agnostic)
- Represents both the ontologies and data annotations
- Exploits logical structure of the ontologies
  - Querying annotations of “dermal bone” will return annotations of “ectopterygoid”

# Nodes

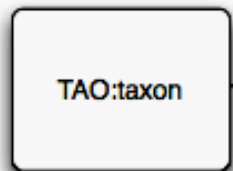
<b>node_id</b>	<b>ontology term</b>	<b>label</b>
548	PATO:0000462	"absent from organism"
10373	TTO:1001979	"Danio rerio"
16249	TTO:101040	"Danio"
53		
	OBO_REL:part_of	"part_of"
77	OBO_REL:is_a	"is_a"
48988	PHENOSCAPE:exhibits	"exhibits"

# Links

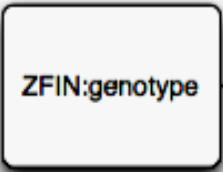
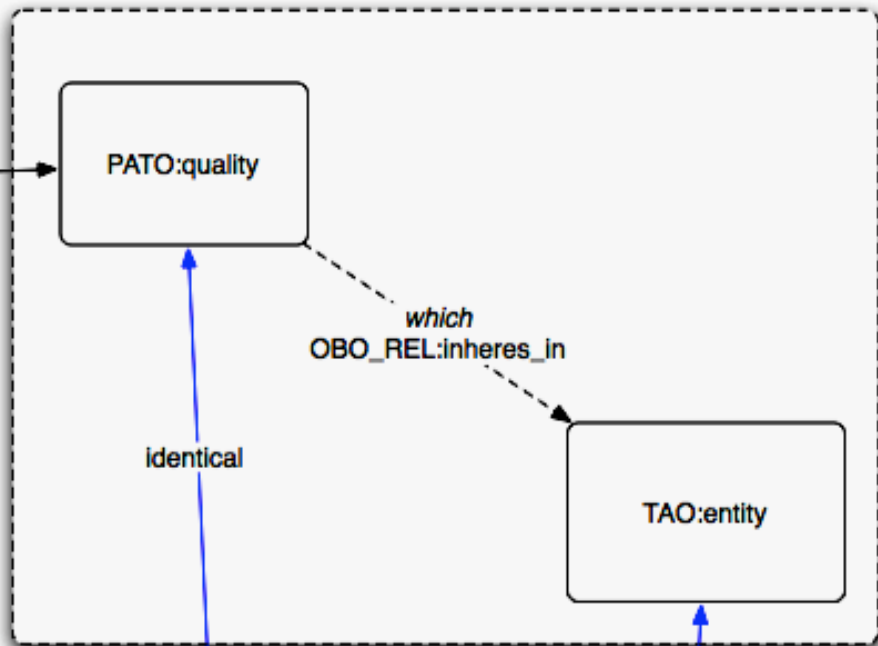
<b>node_id</b>	<b>predicate</b>	<b>node_id</b>
10373	77	16249
	--> <i>"Danio rerio is_a Danio"</i>	
10373	48988	109224
	--> <i>"Danio rerio exhibits absence in a process which is part of infraorbital 1"</i>	

# User interface

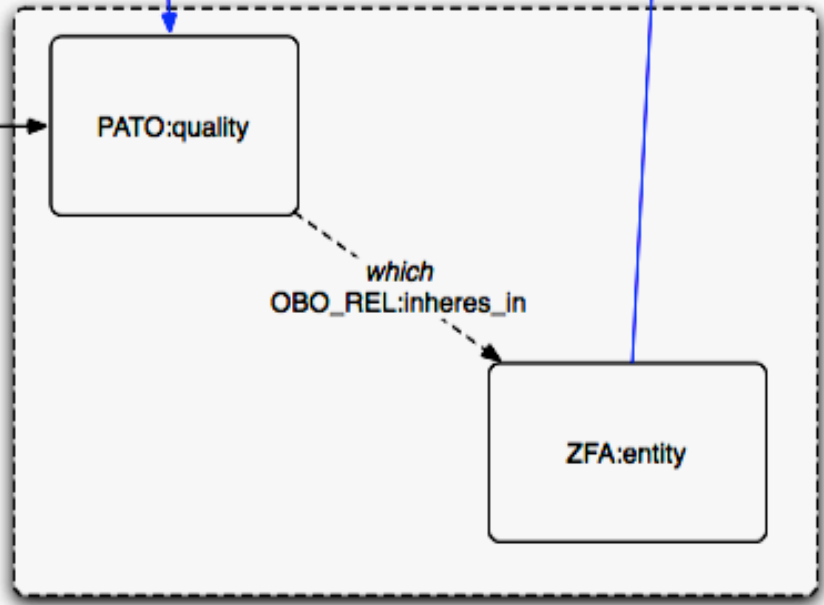
- Search for anatomical entity
  - What do we know about phenotypic variation for a given anatomical feature?
- Search for taxon
  - What do we know about the phenotype of a given taxon?
- Search for gene
  - What sister taxa vary from each other in same way that a given genetic mutant varies from wild type?



exhibits



exhibits



# Informatics requirements for application to clade **X**

- Ontologies
  - Entities: **X Anatomy Ontology**
  - Qualities: **Phenotype and Trait Ontology (PATO)**
  - Taxonomy: **X taxonomy ontology**
- Curation tool: **Phenex**
  - Mutant phenotypes from zebrafish (14K in ZFIN)
  - Cypriniform “evolutionary phenotypes” from the literature
- Ontology-driven database: **OBD**
  - With a user interface tailored for evolutionary queries

# Acknowledgements

- Phenoscapers
  - Wasila Dahdul, John Lundberg Paula Mabee, Peter Midford, Monte Westerfield
  - Our data curators, workshop participants and software testers
- BBOP & ZFIN
  - Suzi Lewis, Mark Gibson, Melissa Haendel, Chris Mungall, Nicole Washington
- Funding from the National Science Foundation

